

# WHITE WOOD APARTMENTS

The Limited Edition of Luxury for the Budgeters



**NRM**  
BUILDERS & DEVELOPERS

28/3375 | Ground Floor | "Menon Complex" | Elamkulam | Kadavanthara | Kochi - 682020

**+91 99 95 012000**

# WHITE WOOD APARTMENTS

The Limited Edition of Luxury for the Budgeters

## ABOUT US

We have a spotless track record. It spans over half a century. Construction, contracts and trading are our forte. Now we are making a difference in the segment of living spaces with the strength of our track record and we are committed to translate our dreams with all its perfection.

Luxury, become more exclusive when it is limited in numbers. The WHITE WOODS with just 8 apartments and with the finest attributes of luxury, with intelligent space layout and the finest location for your years to cherish

**"WHITE WOODS"** is connected to two major intersections of the city of Kochi through the **THAMMANAM-PULLEPADY ROAD**. **Thammanam Jn.** in the east is at a distance of 350 meters, and in the south at a distance of 350 meters is the Salem - Kochi - Kanyakumari NH Highway.

Thammanam is a predominantly residential zone with facilities like grocery stores, Banks, schools, medical clinics, Hospitals, libraries, temples, churches and mosques.

## Amenities

- Rain water harvest
- Aesthetically covered roof top
- Roof top recreation area
- Well water filtration plant
- Servant's toilet
- Separate inverter wiring
- Reception

## Distance from the project

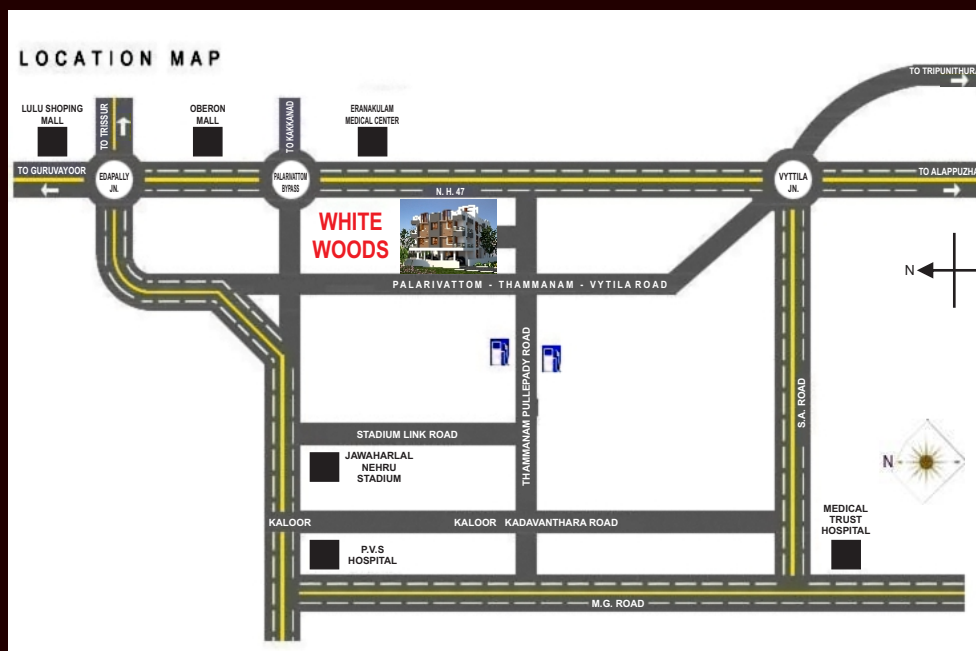
Info park	-	10km
International airport	-	23 Km
North Railway station	-	4.5 Km
South Railway station	-	4 Km
M.G Road	-	5 Km
Palarivattom Jn	-	2 Km
Vytilla Jn	-	2 Km
Ernakulam medical center hospital	-	1.5 KM
Thammanam Jn	-	350 Mts
MPM School	-	500 Mts
N. H - 47	-	350 Mts

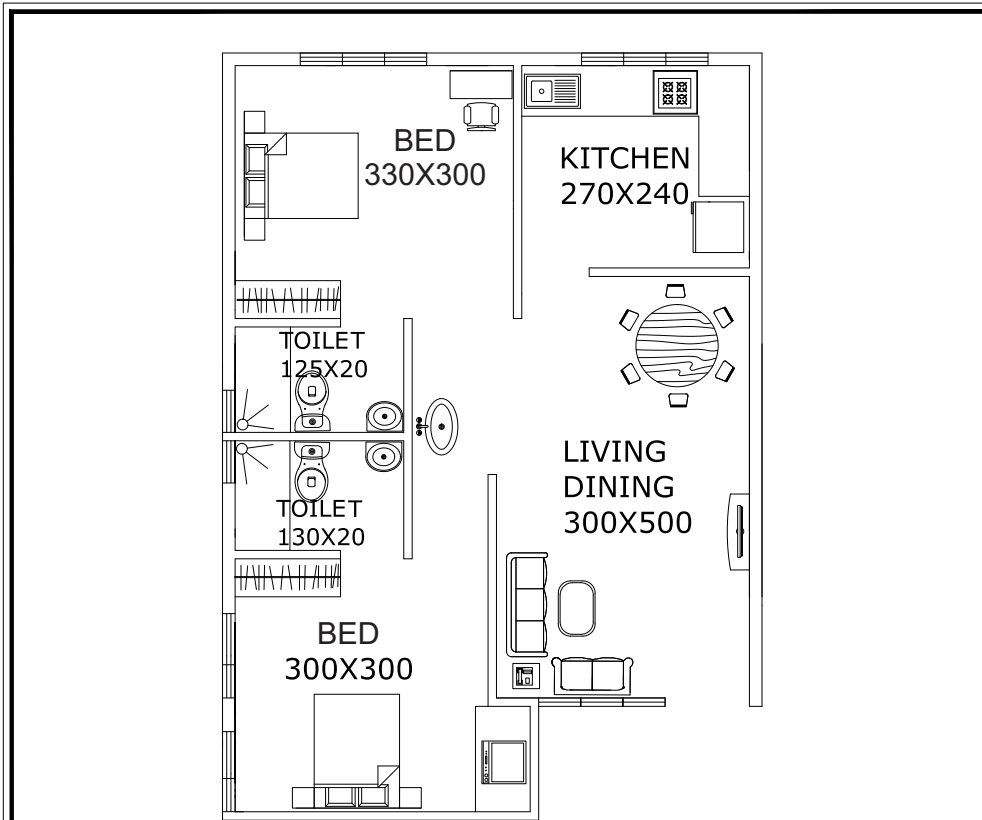
### Completed Projects :

- |                  |                 |
|------------------|-----------------|
| 1. White Complex | 4. White Crown  |
| 2. White Pearl   | 5. White Petals |
| 3. White Tower   | 6. White Plaza  |
|                  | 7. White Castle |

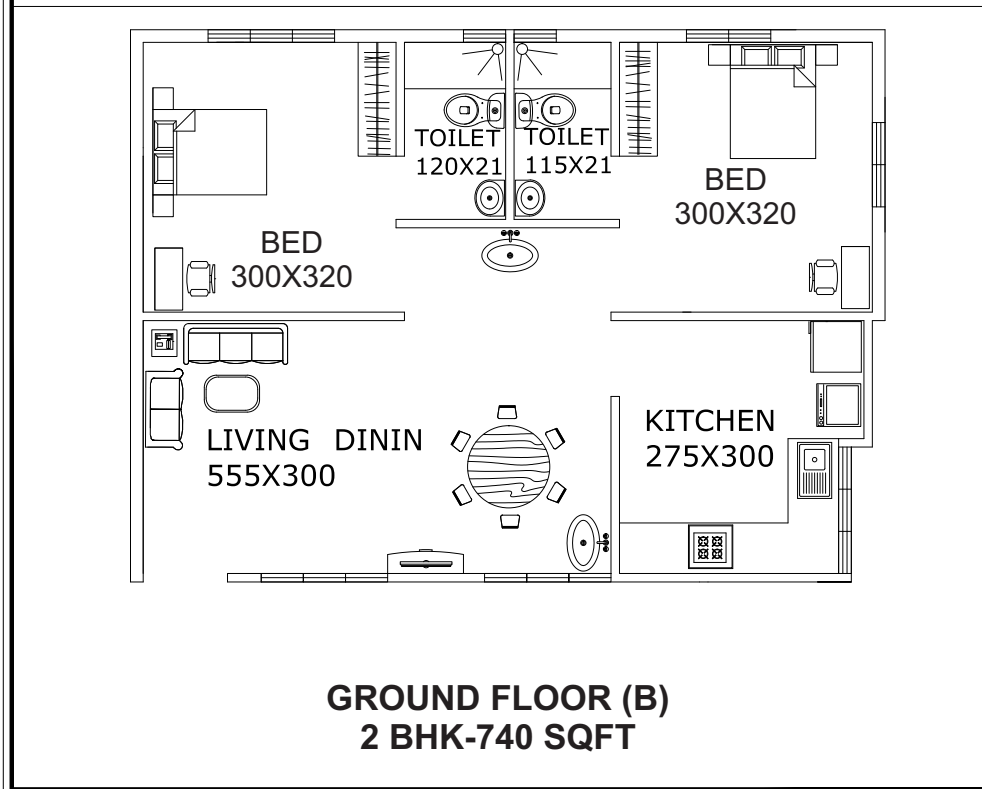
### SPECIFICATIONS

- Foundation : R.C.C pile foundation
- Structure : R.C.C framed structure
- Wall finish : Cement paint for external walls, Putty finish and distemper finish for internal walls
- Walls : First quality cement solid blocks
- Doors : Elegantly designed front door for main door & hard wood frames with panel shutters for internal doors
- Windows : Aluminum framed windows with steel grills and glass panes
- Toilets : Rustic tiles for floor, ceramic tiles adding up to a height of 5 feet. Concealed plumbing, branded sanitary fixtures, and C.P fittings
- Flooring : Vitrified tiles or Porcelain tiles
- Kitchen : Ergonomically designed kitchen with granite worktop and stainless steel sink.
- Electrical : Concealed conduit copper wiring with independent energy meter. Light, fan points and other necessary plug points with standard switches and switch board.
- Water supply : Drinking water from KWA line in kitchen, well water for all other purpose.
- Car park : Covered car park

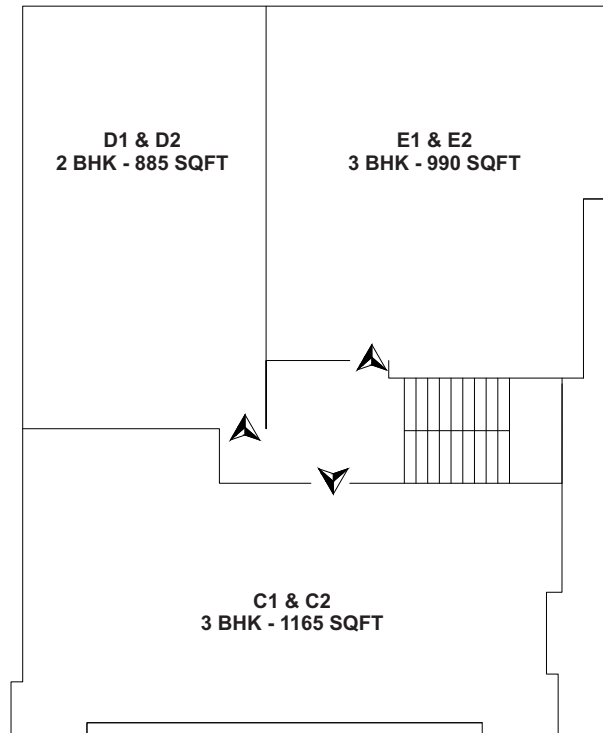




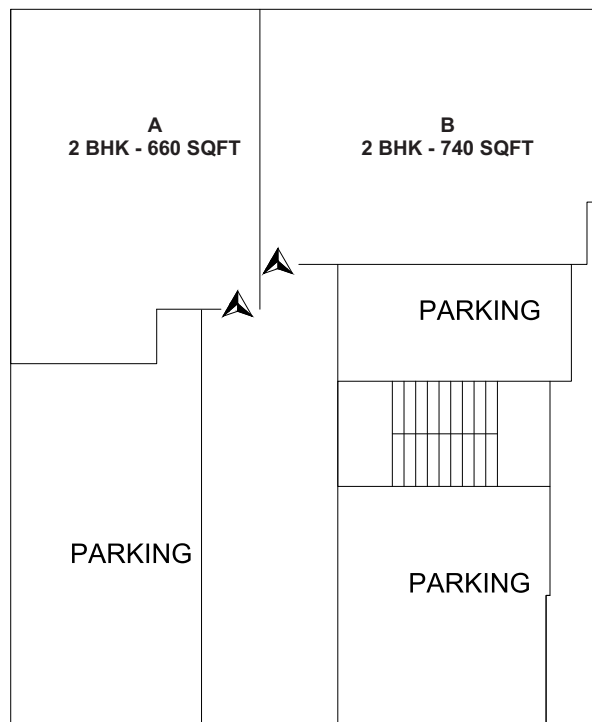
**GROUND FLOOR (A)**  
**2 BHK-660 SQFT**



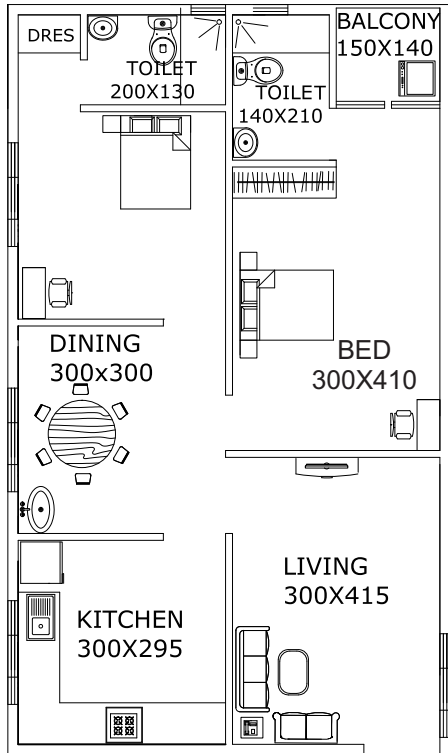
**GROUND FLOOR (B)**  
**2 BHK-740 SQFT**



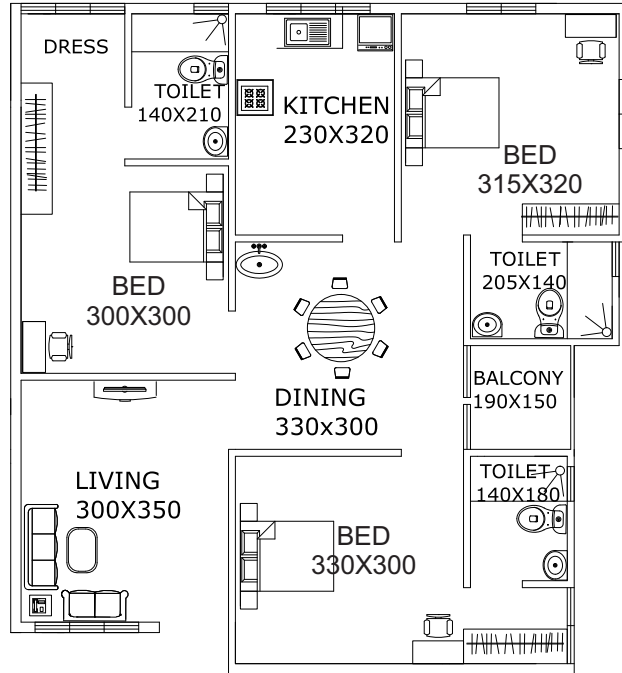
**TYPICAL FIRST & SECOND FLOOR**



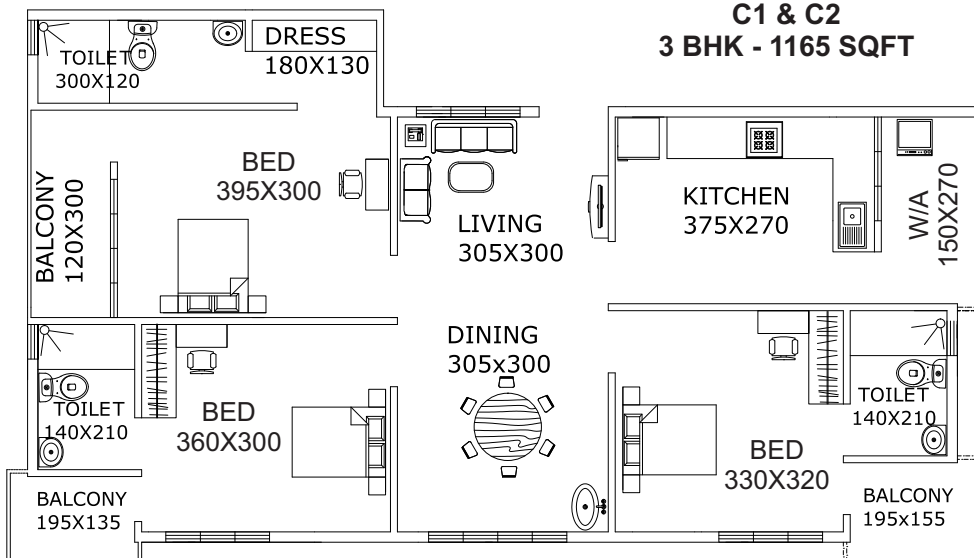
**GROUND FLOOR**



**FIRST & SECOND FLOOR**  
**D1 & D2**  
**2 BHK - 885 SQFT**



**FIRST & SECOND FLOOR**  
**E1 & E2**  
**3 BHK - 990 SQFT**



**FIRST & SECOND FLOOR**  
**C1 & C2**  
**3 BHK - 1165 SQFT**