



**EDAPPALLY  
ERNAKULAM**

RERA. Reg. No: K-RERA | PRJ | ERN | 027 | 2022

**New Launch  
14<sup>th</sup> Project**

**2 & 3 BHK  
Premium Apartments**



**Near Changampuzha Park & Metro Station, Edappally**

**NRM'S  
KAROLLIL PROPERTIES**

Completion: 2024



55/3266-B, Ground Floor,  
Menon's Complex, Elamkulam  
Kadavanthra, Kochi - 682020



**9847163970**



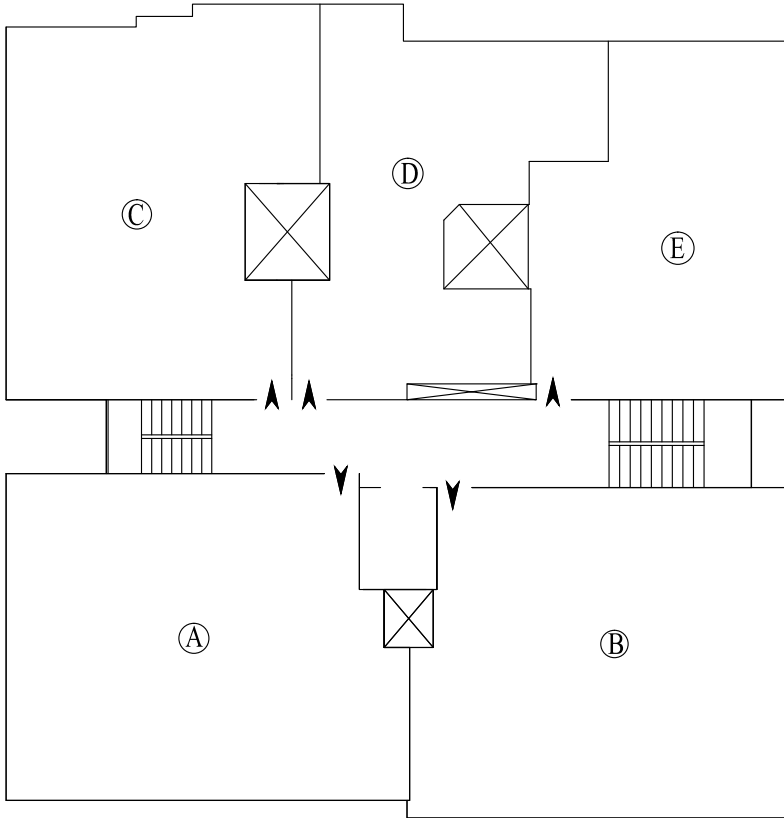
**www.nrm.co.in**

# NRM'S KAROLLIL PROPERTIES

## COMPLETED PROJECTS :

1. White Complex, Kadavanthra
2. White Pearl Thammanam
3. White Tower, Kuthappady
4. White Abode, Kuthappady
5. White Crown, Kakknad
6. White Petals, Thammanam
7. White Plaza, Vytilla
8. White Castle , Kakknad
9. White Homes, Thripoonithura
10. White Wood, Thammanam
11. White Lotus, Palarivattom
12. White Enclave, Thammanam
13. White Moonstone, Kaloor

## Floor Plan



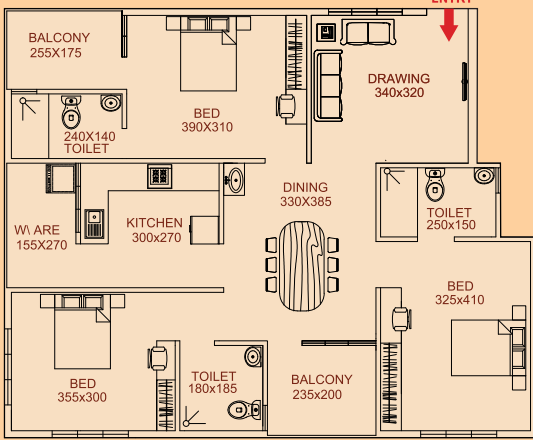
## Amenities

- Generator
- Lift
- KWA & Well Water
- Well water filtration plant
- Aesthetically covered roof top
- Roof top recreation area
- Rain water harvest
- Servant's toilet
- Covered car park
- Provision for solar power for common areas
- Multi gym
- Solid waste disposal plant
- Security cabin

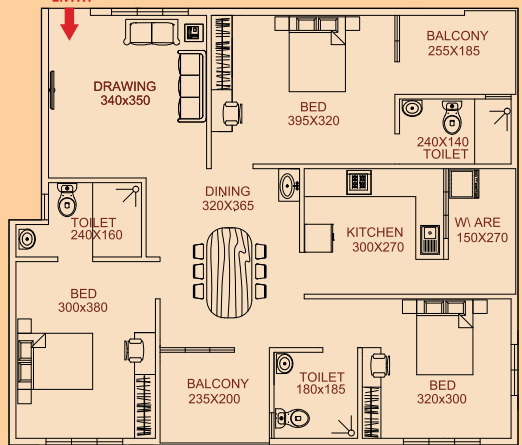
## Distance from the project

- Changampuzha park & Metro station : 700 M
- Super Markets : 300 M
- School : 300 M
- Bus stop : 20 M
- Hospitals : 1.5 KM
- Airport : 22 KM
- Railway station : 5.5 KM
- National highway : 1000M
- Temples : 500 M
- Edappally St. George church : 1.5 KM
- Palarivattom junction : 2.5 KM
- Kaloor junction : 4 KM

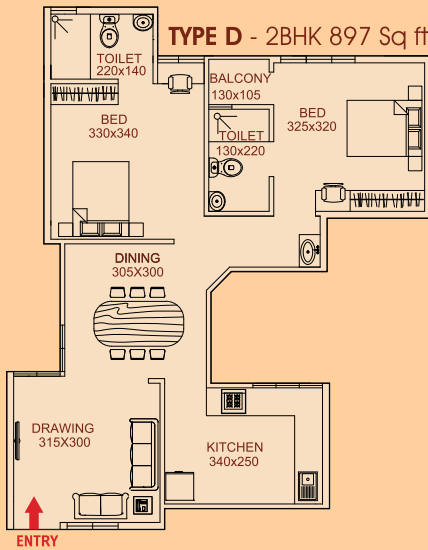
**TYPE A - 3BHK 1377 Sq ft**



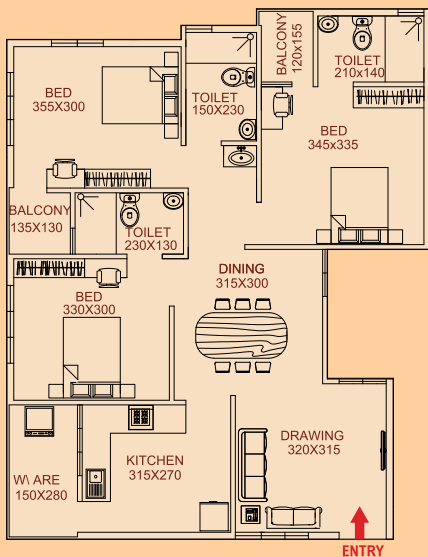
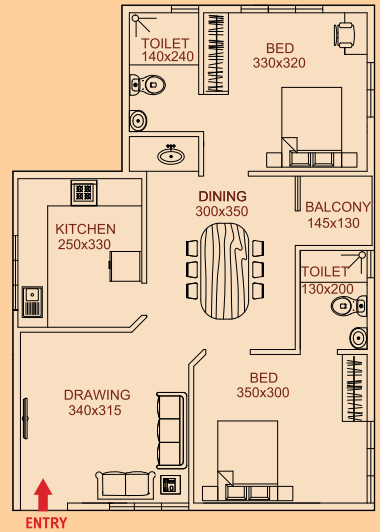
**TYPE B - 3BHK 1350 Sq ft**



**TYPE D - 2BHK 897 Sq ft**



**TYPE E - 2BHK 906 Sq ft**



## SPECIFICATION

- **Structure** : RCC framed structure. Foundation as per structural Requirement. Walls with solid blocks.
- **Flooring** : 2 & 2 Vitrified tiles for the entire apartment,
- **Toilets** : Ceramic tiles for floors and glazed tiles for walls up to 6ft height. Concealed pipes and CP fittings. Hot and cold water taps with overhead shower and provision for geyser. Wash basin in bathrooms and dining space. Cera / Equivalent EWC.
- **Fittings** : Godrej / Doorset / Equivalent lock for front Door, Stainless steel hinges. Branded brass fittings and mortise lock for inside doors.
- **Kitchen** : Counter with Black Granite top, wall tiling on counter top up to 45 cm height. Stainless steel sink,
- **Joinery**: Front Door & Inside door frames made of best quality Hard wood. Skin doors for inside doors. Windows using Powder coated Aluminium. Saint Gobain glass used to provide privacy, cooling and aesthetics.
- **Painting**: Putty finished walls with emulsion finish for all rooms. Asian paints/Equivalent Emulsion for all walls, Lacquer finish for inside doors. Enamel finish for external doors. Exterior painting with Asian Paints Apex or similar
- **Electrical** : Single phase power supply with concealed conduit wiring with copper conductor adequate light and fans points, 6/16A plug points etc. Controlled by ELCB and MCB's with independent energy meter. Elegant switches and quality Electrical wires.
- **Lift**: Passenger cum bed lift stopping on all floors.
- **Fire fighting** : Fire fighting arrangements as per Kerala Building Rules and Fire Force requirement. Every floor provided with hose reel box and hose.
- **Generator** : For Lift, Common lights, water pumps etc. Automatic Generator Change Over cum load limiter with a power allocation of 500W for 2BHK and 750W for 3BHK. Power plugs not connected during generator supply mode.
- **Cable TV**: Concealed cable TV point in living room.
- **Water Supply** : Water supply from KWA, and purified water from open/bore well through sump and overhead tank. common plumbing done with OH & Underground tanks.
- **AC** : Wired Provision for AC in master bed rooms, Non-wired provision in other bedrooms.

## Location

