



**NRM**

**BUILDERS & DEVELOPERS**

28/3375 | Ground Floor | "Menon Complex" | Elamkulam | Kadavanthara | Kochi - 682020

**+91 99 95 012000**

# WHITE LOTUS APARTMENTS

The Limited Edition of Luxury for the Budgeters

## ABOUT US

We have a spotless track record. It spans over half a century. Construction, contracts and trading are our forte. Now we are making a difference in the segment of living spaces with the strength of our track record and we are committed to translate our dreams with all its perfection.

Luxury, become more exclusive when it is limited in numbers. The WHITE LOTUS with just 9 apartments and with the finest attributes of luxury, with intelligent space layout and the finest location for your years to cherish

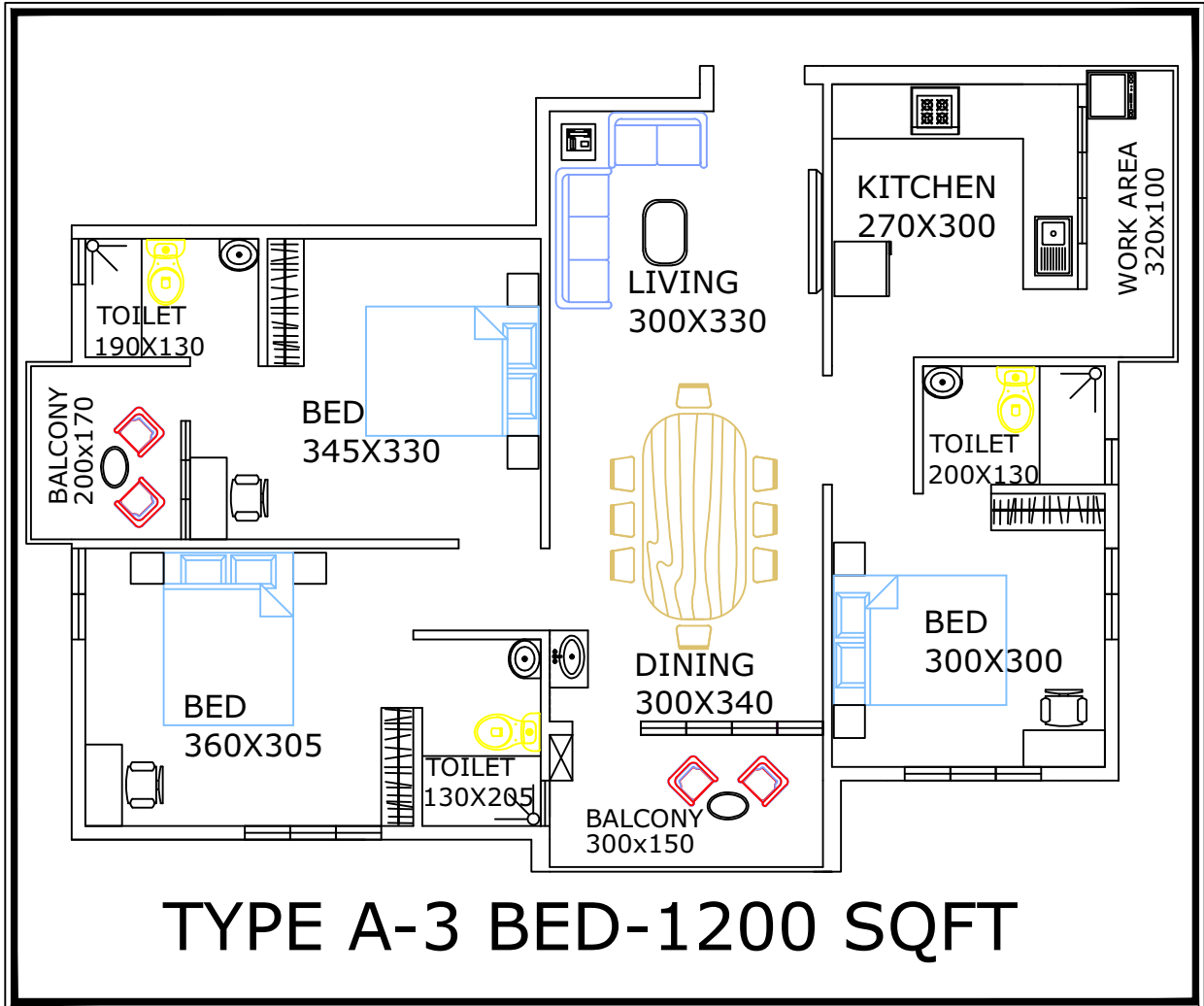
**"WHITE LOTUS"** is connected to major intersections of the city of Kochi through the **Vyttila - Palarivattom ROAD**. in the east is at a distance of 350 meters. Palarivattom is a predominantly residential zone with facilities like grocery stores, Banks, schools, medical clinics, Hospitals, libraries, temples, churches and mosques.

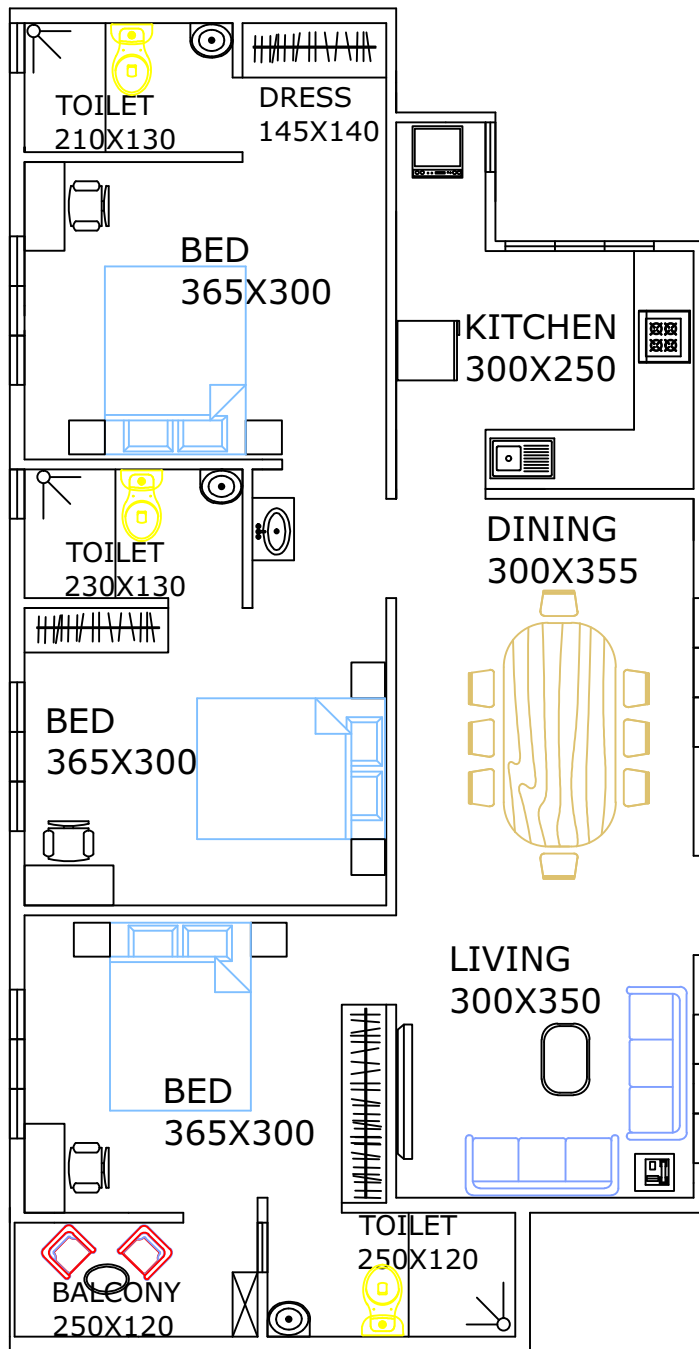
## Amenities

- Rain water harvest
- Aesthetically covered roof top
- Roof top recreation area
- Well water filtration plant
- Servant's toilet
- Separate inverter wiring
- Reception
- Lift
- Generator
- Guest Car Parking
- Two Wheeler Parking Area

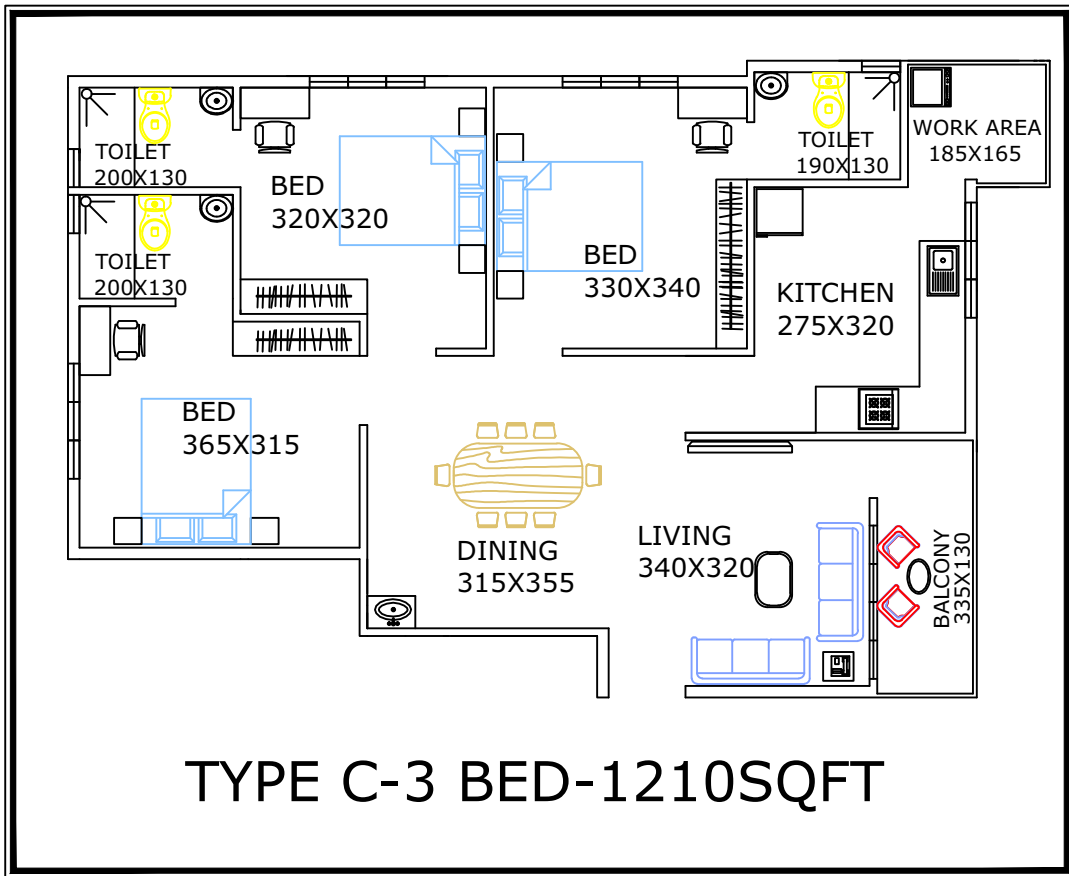
## Distance from the project

Info park	-	10km
International airport	-	23 Km
North Railway station	-	4.5 Km
South Railway station	-	5 Km
M.G Road	-	5 Km
Palarivattom Jn	-	1 Km
Vytilla Jn	-	3 Km
Ernakulam Medical Center Hospital	-	1.5 KM
Thammanam Jn	-	1 Km
N. H - 47	-	1 Km
Church & Temple, Super Market, Schools	-	-in close proximity





**TYPE B-3 BED- 1170 SQFT**



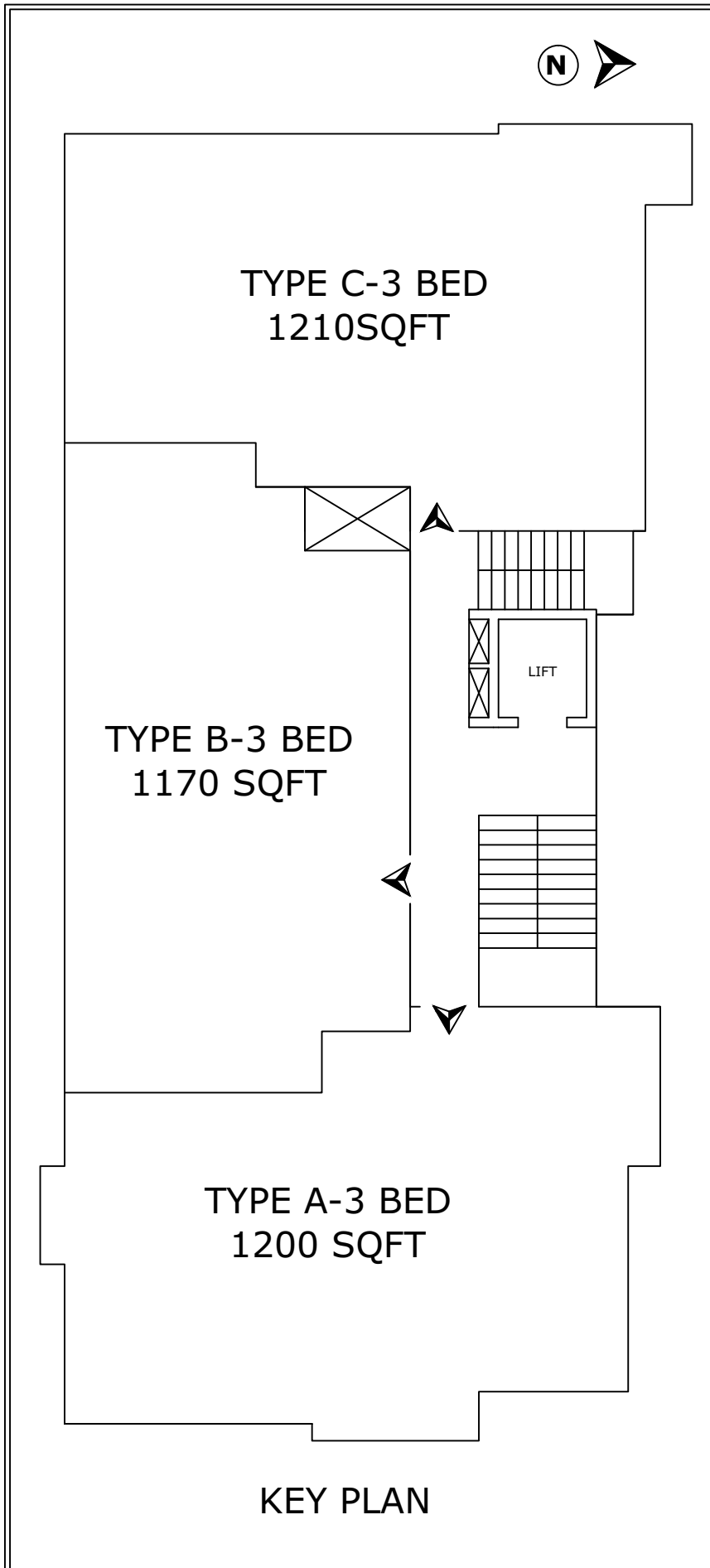


TYPE C-3 BED  
1210SQFT

TYPE B-3 BED  
1170 SQFT

TYPE A-3 BED  
1200 SQFT

KEY PLAN



- Completed Projects :**
- |                                |                             |
|--------------------------------|-----------------------------|
| 1. White Complex, Kadavanthara | 5. White Petals, Thammanam  |
| 2. White Pearl, Thammanam      | 6. White Plaza, Thammanam   |
| 3. White Tower, Thammanam      | 7. White Castle, Kakkanad   |
| 4. White Crown, Kakkanad       | 8. White Home, Tripunithura |
|                                | 9. White Wood, Thammanam    |

## SPECIFICATIONS

- Foundation : R.C.C foundation
- Structure : R.C.C framed structure
- Wall finish : Premium Quality Plastic Emulsion for external walls, Two Coat Putty finish and Two Coat Premium Quality walls Plastic Emulsion finish for internal walls
- Walls : First quality cement solid blocks
- Doors : Elegantly designed Teak wood for front door & hard wood frames with panel shutters for internal doors
- Windows : Powder Coated Aluminum framed windows with steel grills and glass panes
- Toilets : Rustic tiles for floor, ceramic tiles adding up to a height of 5 feet. Concealed plumbing, branded sanitary fixtures, and C.P fittings
- Flooring : Vitrified tiles or Porcelain tiles
- Kitchen : Ergonomically designed kitchen with granite worktop and stainless steel sink.
- Electrical : Concealed conduit copper wiring with independent energy meter. Light, fan points and other necessary plug points with standard switches and switch board.

